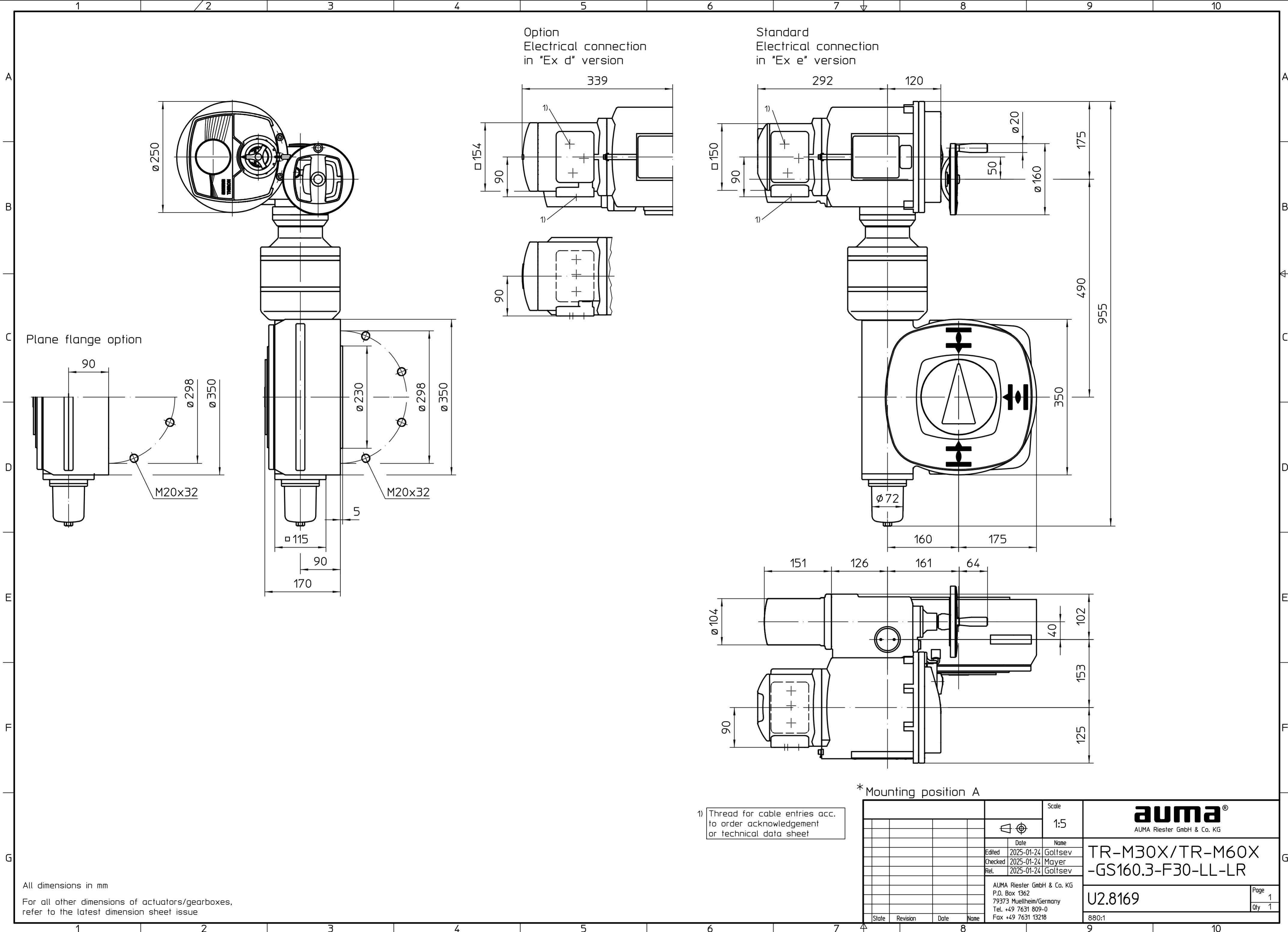


This drawing is subject to the provisions on copyright protection.



Option
Electrical connection
in "Ex d" version

Standard
Electrical connection
in "Ex e" version

Plane flange option

* Mounting position A

1) Thread for cable entries acc. to order acknowledgement or technical data sheet

All dimensions in mm
For all other dimensions of actuators/gearboxes, refer to the latest dimension sheet issue

| | | | | | |
|---|------------|---------|--|--|---|
| Scale | | 1:5 | | AUMA Riester GmbH & Co. KG | |
| Date | | Name | | | |
| Edited | 2025-01-24 | Goltsev | | TR-M30X/TR-M60X -GS160.3-F30-LL-LR U2.8169 | |
| Checked | 2025-01-24 | Mayer | | | |
| Ret. | 2025-01-24 | Goltsev | | | |
| AUMA Riester GmbH & Co. KG P.O. Box 1362 79373 Muellheim/Germany Tel. +49 7631 809-0 Fax +49 7631 13218 | | | | Page | 1 |
| | | | | Qty | 1 |
| | | | | 880:1 | |